

Managed for multiple uses.



Tom Newby, Forestry Corporation NSW, and Gumbaynggirr nation women share knowledge on fire management during a cultural burn.

In this issue

- » New chain of custody standard
- » RW joins marketing campaign
- » Consumers support PEFC
- » Companion for iconic building
- » Certification buzz at Build Expo
- » Responsible forestry benefits
- » Sustainable city oasis
- » The power of chain of custody
- » Nominations open for Stanton Award



Jason Ross presents in Geneva... Responsible Wood growing from strength to strength.

All in the family... Antonio Brunori, national secretary of PEFC Italy (left), presents Ben Gunneberg, CEO of PEFC International, with a PEFC certified shirt at the Members Meeting in Geneva.



New chain of custody standard highlight of PEFC Geneva talks.

THE PEFC International family converged on Geneva, Switzerland, to discuss key issues and share experiences as part of the 2019 PEFC Members Meeting.

Running from April 10 to 11, the meeting provided PEFC members with an ideal opportunity to discuss global impacts on forest certification and emerging trends in forest management and chain of custody for forest products.

For Ben Gunneberg, CEO of PEFC International, innovation both within the forests and the supply chain were key features across the members' meeting.

"It's great to see innovation and inspiration in the many projects undertaken by our members," Mr Gunneberg said.

Key discussions included the release of a new PEFC International chain-of-custody

standard which is set to be released for further comment later in the year.

Representing Responsible Wood, Jason Ross briefed PEFC members on the development of Australia's largest and most diverse forest certification scheme.

Responsible Wood has international endorsement and mutual recognition by PEFC and is an active participant in the PEFC International family.

"This endorsement is critical; it provides importers and exporters with the opportunity to demonstrate timber legality globally," Mr Ross said.

Responsible Wood continues to grow from strength to strength and is currently developing a new standard for sustainable forest management.

"This is set to be a truly trans-Tasman, joint Australian and New Zealand standard."

Mr Ross said the new standard represented a watermark for sustainable forest management across the Australasian region.

Reflecting on the Responsible Wood brand, Mr Ross was buoyed by the response from representatives across the PEFC International family.

"It's great to see innovation and inspiration in the many projects undertaken by our members"
– Ben Gunneberg

"The brand had strong, positive feedback from participants in the PEFC International family," he said.

"Responsible Wood continues to push the case for sustainable forest management, especially in the timber, construction and paper sectors."

PEFC invites public comment on new standard and trademark.

PEFC International, the world's largest forest certification system, invites the public to provide feedback on the PEFC chain of custody and PEFC trademark standards.

With a deadline of July 9 this year, subscribers have the opportunity to provide comments, feedback and suggestions during the public consultation period; ensuring that the standards meet the needs and expectations of your business.

Speaking on the draft standards, Responsible Wood CEO Simon Dorries stressed the proposed changes were still in the draft form. He encouraged all

members, scheme holders and stakeholders to contribute to the public consultation.

"The proposed standards have flagged significant changes for PEFC certification, specifically with respect to DDS, the definition of core sustainability issues as it relates to controversial sources and its impact on uncertified materials," Mr Dorries said.

"This is especially relevant in countries which have weak legislation or law enforcement. PEFC forest certification provides an assurance of

Revisions proposed on due diligence system and PEFC 'pure label'



sustainability as well as timber legality."

Among other changes, the new standards have flagged revisions to product groups, credit validity, certificate check and recording and trademark licensing."

The public will have the opportunity to participate in a series of webinars that will

provide more information about the proposed changes.

In total, there two webinars – one of May 29 and June 3 with a third webinar scheduled for 7 pm on July 3.

Details about these webinars are provided on the Responsible Wood website: www.responsiblewood.org.au

Responsible Wood celebrates World Environment Day

WITH air pollution the focus of this year's World Environment Day, Responsible Wood CEO Simon Dorries was well equipped with facts and figures to discuss the importance of trees and forests in regulating air quality.

"It's often said that knowledge grows on trees, and trees and responsible forestry go hand in hand," Mr Dorries said.

Reflecting on the new PEFC International 'Air Pollution Facts' campaign, Mr Dorries stressed the importance of forest

certification in protecting forests for future generations.

"Trees and Forests are the world's lungs; the role of trees is instrumental in regulating the earth's ecosystem," he said.

"And this is why the forest certification message is so important. PEFC and Responsible Wood provide consumers with the trust that timber and paper-based products are sourced from sustainably managed forests.

"Whether it's Responsible Wood in Australia or PEFC Internationally, forest certification demonstrates a strong commitment by

forest managers and farmers to meet high benchmarks for sustainable forest management."

Indeed for foresters, forest certification is a multi-generational commitment; a commitment that benchmarks responsible forest practices across more than 50 indicators. Known as the Montreal Process, the indicators go to the heart of Responsible Wood and PEFC forest certification.

"Globally more than two-thirds of all certified forest area is covered by PEFC forest certification," Mr Dorries said. "We are a community-based scheme and operate as a one large family."

SHAWN THE FORWARD THINKER

Shawn Britton
Director
Britton Timbers



At the forefront of uncovering processing solutions.

The balance between conservation of our wild natural places and producing enough beautiful wood products to meet society's demands, is not an easy task. But it's vital that we get it right. Because as The Ultimate Renewable resource, trees are part of the solution to the greatest challenge of our time - climate change. That is why we are working with Sustainable Timber Tasmania and the University of Tasmania's Centre for Sustainable Architecture with Wood to determine the best methods for processing plantation grown solid wood and innovating with our native forest resource.

We're investing heavily because when trees are replanted, timber is part of the solution to climate change. And so are we.

Visit weareastimber.com to learn more.



WE ARE
TASMANIAN
TIMBER

ORIGINAL

TASMANIAN
TIMBER

Responsible
Wood

Forest Industries Association
of Tasmania

CERTIFIED
TIMBER

Tasmania

Billboards, newspapers, magazines targeted as
Tasmanian Timber promotion takes shape

Responsible Wood features in national marketing campaign.

NATIVE wood promotion group Tasmanian Timber is set to feature on the national stage following the launch of a new campaign focusing on forest certification and the sustainability of the state's timber products.

According to Shawn Britton, chairman of Tasmanian Timber, the Responsible Wood certification scheme is an all-important step in demonstrating the sustainable origins of Tasmanian timber.

"Campaign foundation research and the inquiries fielded through the Tasmanian Timber helpline have shown a strong need within the marketplace for education around certification in Australia and the sustainability of timber products," Mr Britton said.

"There is also an ongoing need to communicate around

forest management, value adding and innovation with the communities making long-term decisions about log supply."

On hand to discuss Responsible Wood's involvement in the campaign, Jason Ross was jubilant about the campaign's focus on the forest certification message.

"Awareness of forest certification specifically amongst architects, engineers and end-users of timber based products remains low," he said.

"What this campaign strives to do is to improve the visibility and educate consumers about forest certification, to take Responsible Wood to a national audience,"

Australia's largest and most diverse forest certification scheme, more than 11.5 million ha of is covered by the Responsible Wood certification scheme, with 250 businesses carrying the Responsible Wood 'trust mark.'

Many of these businesses are Tasmanian – now uniquely and proudly so.

"As such the Tasmanian Timber campaign sees a need to communicate locally and nationally on these topics," Mr Britton said. "The series of ads produced sheds light on the industry behind Tasmanian timber – an industry of auditors, foresters, value adders, researchers and innovators," Mr Britton said.

As to the particulars, the campaign will combine print,

digital and social media advertising.

The advertisements have been placed in Green Magazine, print and digital publications nationally, Tasmania's major and regional papers, on Hobart Airport digital screens, at the recent AGFEST trade event, and sponsored posts through Instagram.

For more information about the campaign visit the Tasmanian Timber campaign www.weareastimber.com

**WAYNE
THE
WATCHMAN**

Dr Wayne Tibbits CF
Program Manager, Forestry
Global Mark

I am an independent auditor of forest management practices.

I make sure forests are being managed sustainably throughout Australia and New Zealand. I also guide others in my field internationally. To pass my audit, forest managers must maintain or enhance biodiversity, maintain the productive capacity of the forest, maintain forest ecosystem health and vitality, protect soil and water resources, and maintain or enhance the forests' contribution to the carbon cycle, to name a few. Only then can they achieve Responsible Wood Certification.

Sustainable Forest Management Certification provides assurances that forests are conserved and managed responsibly to ensure they deliver social, environmental, cultural and economic benefits now and into the future.

I'm keeping an eye on Tasmania's forests, and I can assure you that Tasmania's certified forest management practices are amongst the best in the world.

Visit weareastimber.com to learn more.

ORIGINAL
TASMANIAN
TIMBER

Responsible
Wood

Forest Industries Association
of Tasmania

CERTIFIED
TIMBER

Tasmania

Consumers support products that carry the PEFC trade mark

NEW research suggests 70% of consumers support PEFC certification on forest products

Responsible Wood CEO Simon Dorries says forest certification is a 'must' for processors, retailers and merchants that sell timber and paper-based products to more environmentally aware consumers.

Speaking ahead of the launch of a new 'traceability' campaign, Simon Dorries stressed the importance of PEFC and Responsible Wood certification in demonstrating the sustainable origin of timber.

"In Australia we talk about the ultimate renewable; PEFC or Responsible Wood certification is an important step in demonstrating the sustainable and legal origin of the timber," Mr Dorries said.

As the national governing body for PEFC in the Australian marketplace, Responsible Wood has a strong grasp of the domestic market conditions.

Reaching out to industry to help educate consumers on the importance of forest certification

"Certainly demand for PEFC or Responsible Wood certification is rising among consumers; there is no question consumers are more environmentally and socially aware when making purchase decisions," Mr Dorries said.

And for processors, retailers or merchants, Responsible Wood can assist in providing information including pathways to

achieve certification.

"Often we get asked by processors retailers and merchants how they can participate in the Responsible Wood or PEFC certification scheme. It's the same with processors, whether the company wishes to carry chain of custody or pass on the certification, Responsible Wood can provide assistance to anyone interested in the certification process," Mr Dorries said.

Last month, Responsible Wood partnered with the Australasian Furniture Association to provide technical guidance to AFA members interested in certification.

"Our relationship with the AFA is an example of the steps Responsible Wood is taking to reach out to the industry and educate consumers on the importance of forest certification," Mr Dorries said.

Entries open: Australian Timber Design Awards

RESPONSIBLE Wood is proud to announce the continuation of its long running involvement in the Australian Timber Design Awards.

The Australian Certified Timber category acknowledges building projects where Australian timber is used and where credentials for sustainability and legality of wood are confirmed through Responsible Wood, PEFC, or FSC certification.

Entries for the design awards are coming in thick and fast.

Reflecting on last year's entries, where the All Hands Brewing House swept all before it, Jason Ross, marketing and communications Officer, was impressed by the quality of entrants.

"There were entrants from all states and territories, and importantly all projects used certified timber from Australian sources," he said.

"From restaurants and bars, to institutional buildings, hotels, community pavilions and everything in between, the calibre of entrants was outstanding."

To enter the Australian Timber Design awards visit www.timberdesignawards.com.au

Submissions close June 28.

Jason Ross presents Drew Carling of Maddison Architects (right) with the 2018 TDA Australian Certified Timber award.



Awards support projects that build with certified wood



'Companion architecture' at Melbourne's Parliament House...
a new building must not compete with the old, but become part of the surrounding landscape.

Melbourne's Parliament House: a companion for iconic building.

THE question of extending Melbourne's iconic Parliament House building to accommodate 102 new offices for parliamentarians and their staff without blocking any views from the existing building and compromising its considerable heritage value was the challenge faced by architects Peter Elliott Architecture and Urban Design.

While the original 1856 parliament house building was a grand and extraordinarily

impressive building, the architects seemed more interested in reflecting the power and wealth of the gold rush than accommodating working parliamentarians. No offices were included in the original design and in the 1970s a temporary, demountable structure nicknamed the "chook shed" was erected. Intended to stand for only five years, it remained in



The new building represents Victoria in the best way it can – using local materials of the highest quality

place for over 40 years until its recent demolition.

While the façade of the historic Parliament House looks down over Spring Street, the rear of the building enjoys views over historic gardens and on to St Patrick's Cathedral, particularly from the popular dining terrace.

To ensure this famous outlook remained unimpeded, the new building is embedded within the landscape behind the existing building, ensuring views are uninterrupted and achieving architect Peter Elliott's aim

Continued P7



From P6

of what he calls “companion architecture” – where a new building must not compete with the old, but become part of the surrounding landscape.

Any risk that the “embedded” building might feel in any way subterranean has been minimised by a central courtyard bathing the offices in natural light as well as a warm, natural interior material palette including Goodwood Victorian Ash from Australian Sustainable Hardwoods which was used in the ceiling battens, ‘waffle’-style walling, joinery, doors and windows. Favoured for its high quality, beautiful colour, consistent grain, straightness, predictability, strength and ready availability, Victorian ash is a popular timber choice for high-profile public buildings.

ASH Victorian sales and marketing manager Daniel Wright explains: “Now home to Victorian parliamentarians and their staff, this new building represents Victoria in the best way it can – using local materials of the highest quality.”

This high quality also provides the best of both worlds – the grain and textural interest of timber with the benefit of consistency which is imperative when using a single timber throughout an interior. The

use of Victorian ash throughout the interior delivers a continuous flow of design and marries with the building’s natural setting beneath a rooftop which was designed as an Australian native ‘meadow’ by landscape architect Paul Thompson.

A rigorous commitment to environmentally sustainable design was also very much part of the brief for this new building which was designed to a 5 Star Green Star Design and As Built and interiors equivalency. The fact that the Goodwood Victorian ash from ASH has Responsible Wood certification provides the architects the assurance that this timber meets Australian Standard 4707 relating to chain of custody and ensuring the timber originated from a forest managed in accordance with the stringent requirements.

Beyond the specification of materials, the members’ annexe building also meets sustainability objectives by incorporating a fully-accessible intensive green roof.

A rigorous commitment to environmentally sustainable design was very much part of the brief



Cooling and heating are provided by a unique geo-exchange system comprising a network of boreholes, allowing all equipment to be concealed within the building shell and eliminating the need for a gas supply for heating.

No longer confined to a ‘chook shed’, the members of the Victorian parliament can now look forward to going to work in this clever new companion to a grand old Melbourne icon.

Cover story: certification from a forest manager's perspective

Wedding Bells: managing a state forest for multiple uses

IN the NSW North Coast hinterland behind Woolgoolga, within the Gumbaynggirr nation, north of Coffs Harbour, lies the Wedding Bells State Forest; a leading example of how a forest can be managed for multiple uses.

Since its dedication as a state forest in 1917, the forest has operated not only as a successful source of timber production, but as a major recreational asset for the local community and a popular attraction for tourists.

Timber production is an important part of the management of Wedding Bells State Forest; over the past 20 years around 9500 cub m of timber has been harvested each year. This timber is produced as part of a cycle of stands of trees harvested and then regrown using natural regeneration techniques. Over the past 100 years, these stands have been



Kath Crowe, Forestry Corporation of NSW, looks over a young blackbutt plantation in the Wedding Bells state forest.

harvested and regrown multiple times. The majority (around 90%) of the timber produced is sold to local sawmills and used to produce high-value products including bridge girders, poles, veneer and sawn timber. This timber production supports the regional economy and produces

a product that stores carbon for life, assisting in the fight against climate change.

Responsible Wood certification of this timber is the NSW Forestry Corporation's irrefutable proof that sustainable forest management practices are paramount. The

Responsible Wood mark also provides reassurance for the end consumers that the timber comes from a sustainably managed forest.

Forestry Corporation strategic projects and programs leader Justin Black regards Responsible Wood certification as "very important to us because we invest in ensuring our forest management is robust. Across the business we have three staff dedicated specifically to the forest management system but of course all staff are engaged in this process as it is a fundamental part of what we do each and every day."

Responsible Wood is promoted on the Forestry Corporation website and in its annual Sustainability Report.

"We recognise that people are becoming more aware of, and concerned about, how to source environmentally responsible products," Mr Black said. "Increasingly consumers are looking for and environmentally sustainable products and certified renewable timber is just that."

Wedding Bells state forest is a mixture of natural forest and eucalypt plantations. The natural forest includes stands

Irrefutable proof that sustainable forest management practices are paramount.

Continued P9

The buzz was certification at busy Sydney build expo

ALL roads led to the Hordern Pavilion and Royal Hall of Industries as more than 7000 building professionals attended the Sydney Build Expo in March.

With a hearty representation of suppliers and merchants on exhibition stands and presenting on stage, timber and forest-based products were the talk of among building professionals.

Roving the exhibition floor, Responsible Wood's Jason Ross was impressed by the level of traffic throughout the expo and the interest in product certification.

"Responsible Wood is a trust mark carried by more than 250 companies involved in the processing, manufacturing and distribution of timber and forest-based products," Mr Ross said.

"Many of our scheme holders are involved in the building and construction sectors,

Responsible Wood allows them to demonstrate to builders and specifiers that timber is sourced from a sustainable origin, in the forest.

"More and more builders and specifiers are recognising that timber is a renewable, but in order for timber to be the ultimate renewable it all starts in the forest. And that's where Responsible Wood comes in."

In order to participate in the Responsible Wood certification scheme, timber processors, suppliers and merchants must engage an endorsed certification body to ensure that the chain of custody from the forest is maintained.

For those processes, suppliers and merchants looking to gain certification they can contact an endorsed certification body, with a list available for download from the Responsible Wood website to discuss steps involved in achieving certification. For more information visit www.responsiblewood.org.au



At the Sydney Build Expo... Sam Guindi, Kat Sayers and Richard Bickle, all from Bureau Veritas Australia.

Demand for Responsible Wood certification is increasing with a number of timber merchants and suppliers reporting an increase in requests for forest certification claims on timber.

From P8

of Blackbutt, spotted gum, ironbark/grey gum, flooded gum, tallowwood/Sydney blue gum and brushbox with small areas of lowland subtropical rainforest restricted to damp gullies and southern facing slopes. Most of the eucalypt

plantations were established in the 1960s and were predominately flooded gum (*Eucalyptus grandis*) plantations which have been harvested over the last 20 years and replanted with blackbutt (*Eucalyptus pilularis*).

Forests with Responsible Wood accreditation to Australian Standard 4708 have proven that they are conserved and managed responsibly to ensure they deliver not only environmental but social and economic benefits now and in the future – balancing people, planet and profit.

This forest, like all state forests in NSW, is a place for people to connect with nature. The forests are popular with visitors who explore thmt by driving, walking, horse riding and mountain biking. There is even an area for archers within an arboretum managed by the local archery club. Different events are held in the forest by sporting clubs throughout the year including endurance horse riding, four-wheel driving and mountain bike riding but the biggest event of the year is the Kennards Hire Rally Australia, part of the World Rally Championship, which has

been held in this forest for the last six years. The 'Flooded Gums' rally village is the forest's major spectator area during the event, which attracts 2000 spectators for the last stage of the competition

Wedding Bells state forest is just part of more than 11.4 million ha of Australian forests now certified under Responsible Wood's Sustainable Forest Management standard (AS 4708) while more than 250 operators carry Responsible Wood's chain of custody for forest products certification (AS 4707).

Social and economic benefits now and in the future – balancing people, planet and profit.



Private landholders gather at a Monduran for the native forest field day.

Benefits of responsible forestry for landholders



John McNamara... it's all about resource diversity.

HOSTED by Parkside Timber and Private Forestry Services Queensland, more than 35 landowners attended a forest field day on Queensland's central coast last month to hear and see the benefits of sustainable forestry and the importance of ensuring that timber meets Responsible Wood forest certification.

These benefits were clear after they inspected a 5 ha plot of vegetation that had been converted into a certified private native forest with landowners poised to reap benefits from responsible forestry practices'

For John McNamara, CEO of Parkside Timber, the field day was all about providing landowners with options and choice, with timber harvesting providing landowners with a variety of benefits.

"For Parkside Timber it's all about resource diversity," Mr McNamara said. "We are happy to work with landowners to harvest unused timbers on properties.

"The benefits for landowners are many; they not only provide landowners with an additional source of income but they provide improved pastoral coverage across the property."

According to Sean Ryan, executive officer at PFSQ, forestry must play an important role in managing silvopastoral lands for generations to come.

"We talk about smart farms, especially in landcare and land management, but responsible forestry plays an important role in optimising the value of silvopastoral lands," he said.

'The purpose of the field day was to demonstrate to landowners that by removing poor quality trees and leaving healthy actively growing ones, it is the only real way to improve the forest's long-term value in the timber supply chain.

"And for landowners to maximise their returns, they must manage the forests by three simple rules – retain only healthy quality trees, remove any trees with fault and poor crowns, and maintain optimal stocking rates of around 130 stems/ha.

'We do need to look to innovative ways to achieve this now and biofuels and small diameter veneer billets will play an important role in removing the large volumes of previously non merchantable trees that have been left in the stand in the past."

And for Parkside Timber that timber must be certified under the Responsible Wood certification scheme.

"Responsible Wood certification is a 'must'; unless timbers are covered by forest certification its value diminishes," John McNamara said.

Timber Queensland, the peak state body for the industry, also attended the field day and congratulated the efforts of PFSQ and Parkside in promoting greater awareness of the benefits of active private forest management.

"Field days such as this provide first-hand knowledge of the commercial opportunities and land management benefits available to landowners and graziers, CEO Mick Stephens said.

Forestry will play an important role in managing silvopastoral lands for generations to come.

"Not only can good forest management deliver additional income sources from timber, it can provide healthy growing forests with improved environmental outcomes and ground cover. This can assist in the utilisation of otherwise underutilised areas for both timber and grazing."

Responsible Wood pushes for joint forestry standard

Historic trans-Tasman sustainable forest Gold Coast meeting



Ambitious target... developing a joint Australia-New Zealand Sustainable Forest Management Standard (AS 4708).

‘RESPONSIBLE forestry’ was the catch cry as Australian and New Zealand stakeholders attended the first meeting of the AS / NZS 4708 Sustainable Forest Management Standards Reference Committee on Queensland’s .

With broad representation across both sides of the Tasman, the committee chaired by Gordon Duff has the ambitious target of developing a joint Australia-New Zealand Sustainable Forest Management Standard (AS 4708).

The joint standard will provide common benchmarks for certified Australian and New Zealand forests.

Responsible Wood CEO Simon Dorries was buoyed by the committee’s enthusiasm; with a range of proposals put to working groups for consideration.

“Meeting face to face, the committee draws on a broad church of forest growers, community and environmental groups, the supply chain, academics and the trade union movement,” Mr Dorries said.

“Diversity in representation encourages variety in opinion; it is the strength of opinion that is important in achieving a consensus for the new standard.

“Ultimately the integrity of the standard, the sustainable forest management standard, is prefixed on achieving agreement between the different stakeholders.”

Discussing the standard development process in detail, Mr Dorries stressed that the new standard must meet PEFC social, economic and environmental benchmarks.

“In order to maintain the PEFC endorsement the new standard must meet a range of international benchmarks for practice.”

He said PEFC International endorsement was critical to ensure that the new standard had mutual recognition with various sustainable forest management standards across the globe.

Now the challenge is to craft working proposals ahead of the next committee meeting scheduled for August.

To maintain the PEFC endorsement the new standard must meet a range of international benchmarks for practice.

A big architectural statement...
integrating clever design details into a
roof-top garden canopy.



Hoop pine: creating a sustainable city oasis

ONCE a bustling hub of industry that included glassworks, tanneries and rope-makers, Sydney's Waterloo, like so many inner-city suburbs around the world, has been experiencing a process of gentrification given its location only 3 km from the CBD.

It is also close to Sydney airport, beaches

and universities, with the Sydney Morning Herald dubbing it the "10 minutes-from-everywhere suburb".

With heavy industry long gone, it has evolved to become a desirable location in which to live, offering a rising business district where many old industrial buildings have been transformed to contemporary commercial spaces, cafes and studios for creative industries and technology-oriented firms.

The development of more green space such as public parks, has been another part of this process and one such park is Wulaba Park, an expansive green space which boasts one of Sydney's best children's playgrounds and is the central focus of a

trio of new apartment buildings which form the 'Emblem' development.

The most recent of these to be completed is the most compact with only 38 apartments, yet it makes a big statement architecturally.

Award-winning Sydney architect Chenchow Little has been applauded for the way this building integrates clever design details including a roof-top garden canopy that marry this city slicker with its lush parkland setting. This is also achieved through a natural material palette which includes 'spotted gum' detailing on each floor's generous wrap-around balconies.

Project used 100% Queensland hoop pine certified for chain of custody sustainability

Continued P13

From P12

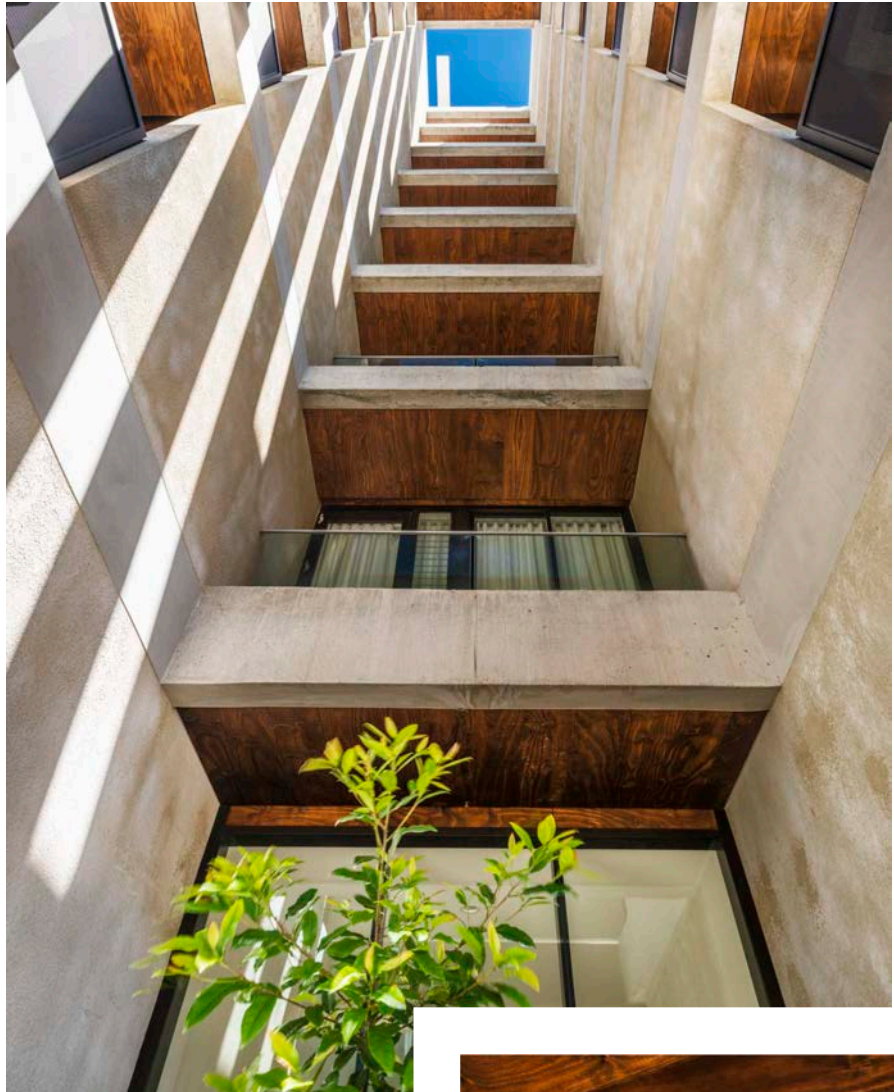
Because it is used on the balcony ceilings, anyone viewing the building from the ground below can see the timber ceilings and it provides an added warmth to the building's exterior.

Austral Plywoods' Connectaply in a 'spotted gum' colour coat was used for the ceilings, soffits and lift well areas. The light weight patented panel system uses only 2400 mm x 28 mm pieces (12.5 mm thick) making installation quick and easy for both residential and commercial construction.

Responsible Wood certification is pivotal to our manufacturing business

The product is 100% Queensland hoop pine certified for chain of custody sustainability by Responsible Wood which means it can add proven environmental sustainability to its other benefits.

"Responsible Wood certification is pivotal to our manufacturing business as it not only shows our customers that we follow the right standards from start to finish, it goes hand in hand with the Austral



Austral Plywoods joint CEOs Stuart and Scott Matthews with national sales and marketing manager Lizan Yee.

Plywoods' ethos," says national sales and marketing manager Lizan Yee.

"As an Australian manufacturer sourcing logs from plantation resources here in Queensland, having the correct certification is vital," she says. "This is one of the many reasons our product was selected for a project such as the Emblem Apartments."

The advantage for architects in specifying timber with Responsible Wood certification means they are assured of a product's environmental sustainability by an independent third party and in the case of this project, which aims to, in the words of architect Chenchow Little, "visually extend the look and feel of the park and landscape into the building, extending that connectivity with the natural environment beyond their 'skin deep'."



View from the national sustainability conference: power of chain of custody

By JASON ROSS

RESPONSIBLE Wood and PEFC ... two logos that mean a lot – or little – to different people.

But what does it mean to be PEFC or Responsible Wood certified and why is forest certification important for consumers purchasing timber or paper based products?

And with that opening stanza I presented my topic for the National Sustainability Conference in Brisbane.

Staged annually, these conferences attract a wide reach of corporates, small business owners and government and are a great way to connect with all-important specifiers and procurement professionals – a broad church of movers and shakers, influencers and decision makers all looking to make sustainable and ethical procurement decisions.

What's more, forest certification is being recognised by procurement professionals when making timber and paper purchasing decisions.

Consumers are now starting to understand the benefits of certification, are comfortable with ethical purchase decisions and are now searching for sustainable timber and paper based products.

Selling sunshine – the compelling case for Responsible Wood

But with all good intentions, procurement of Responsible Wood or PEFC certified timber or paper-based products often breaks down along the supply chain.

As Responsible Wood visibility improves consumers find it difficult to source timber-based products that carry the Responsible Wood trust mark.



For Responsible Wood, chain of custody is king.

And it is through maximising the involvement of merchants and retailers in chain of custody that leads to more and more Responsible Wood certified timber and paper-based products being available for consumers to purchase.

I was fortunate to present to case for forest certification at the conference and outline the benefits of Responsible Wood certification.

Specifically how sustainable forest management and chain of custody works together to ensure that timber and paper is sourced using responsible forestry practices and is supported through the supply chain.

For Responsible Wood or PEFC, certified timber or paper-based products are firmly linked – you can't have one without the other.

So the next time you are looking for timber or paper products look out for the Responsible Wood or PEFC logos. And if these certified products are not available ask your supplier why not?



Addressing the NZ Wood Processors and Manufacturers Association conference in Christchurch... David Parker, Minister for Economic Development, Environment, and Trade and Export Growth (left) and Doug Ducker, board member WPMA.



Using a scheme that meets the New Zealand standard is critical

PEFC, Responsible Wood present winning facts at NZ processors conference

'WOOD manufacturing matters – especially in the regions' was the message delivered at the recent Wood Processors and Manufacturers Association Conference in Christchurch.

And PEFC certification filled a major discussion session at the conference.

On hand to promote the cause, Jason Ross, Responsible Wood's marketing and communication officer, mixed with New Zealand's wood processors and manufacturers, promoting the all-important chain-of-custody message.

"PEFC in New Zealand growing at a rapid rate, especially in forest area," Mr Ross said.

For wood processors, manufacturers, merchants, traders and retailers, chain of custody is king. It provides processors and manufacturers with a gateway to global markets."

As the world's largest forest certification scheme, PEFC is carried in more than 50 countries and has more than 300 million ha of defined forest area currently under forest certification.

"PEFC has strongly recognised schemes in many of New Zealand's largest export markets including Australia, South Korea, Japan and the US," Mr Ross said.

"This provides New Zealand businesses with confidence that home-grown and manufactured and processed timbers that carry the PEFC trust mark meet important environmental and social benchmarks for export.

"With processors and manufacturers increasingly required to demonstrate timber legality in the country where timbers are harvested, PEFC chain of custody is an instrument that can be used to demonstrate ongoing support and commitment to timber legality and sustainable forestry.

"For companies that have chain of custody, the PEFC trust mark is a commitment to procure and use timbers that are sourced from forests that meet the New Zealand standard for sustainable forest management.

"When it comes to demonstrating timber legality and committing to support responsible forestry using a scheme that meets the New Zealand standard is critical."



Digital marketing specialist... Liliane Kao of Hyne Timber accepts the 2018 Richard Stanton Award on behalf of the Hyne marketing team from Responsible Wood's CEO Simon Dorries and chairman Dr Hans Drielsma AM.

Award open to individuals who have contributed significantly to either forest management or chain-of-custody certification

Nominations open for coveted Richard Stanton forestry award

RESPONSIBLE Wood is calling for nominations in this year's coveted Richard Stanton Memorial Award for Excellence in Forest Management or Chain of Custody.

This is the fifth year of the award which pays tribute to a man who devoted his life to sustainable forest management in Australia and internationally.

Richard Stanton was CEO and national secretary of Australian Forestry Standard Ltd (now Responsible Wood) and had a number of key roles in industry organisations.

Nominations for the award are open to individuals who have contributed significantly to either forest management or chain-of-custody certification under the Responsible Wood certification program.

The award nominees will be

those who have contributed to sustainable forest management under AS4708 or chain of custody under AS4707.

The award is open to, but not restricted to, forest owners and managers; chain-of-custody certificate holders; staff of certification bodies; forest scientists and researchers; and designers of products manufactured from sustainable timber.

The award also carries a \$2000 bursary prize.

Applicants for the award will have demonstrated excellence in the following areas:

- A significant and valuable contribution to sustainability.
- Innovation, improvement or excellence in forest management or chain of custody certification.
- A strong commitment to the Responsible Wood certification scheme and sustainable forest management.

- Innovation and Improvement in the promotion and marketing of Responsible Wood certified products

The selection of the successful applicant will be made by the Responsible Wood marketing committee and announced at the annual general meeting in Mount Gambier, SA, on October 22.

Nominations for the award close on October 4, 2019.

Nominations can be forwarded to: Responsible Wood, PO Box 786, New Farm, Q 4005 or email sdorries@responsiblewood.org.au

Previous award winners were:

- 2015: Dr Marie Yee, senior conservation planner, Sustainable Timber Tasmania (system of forest management planning which provides a high level of certainty that biodiversity is managed effectively within the forest at a landscape scale).
- 2016: Mark Leech, a driving force behind Fine Timber Tasmania, a

sustainability-focused, non-profit association which represents the specialty timber supply chain – growers, processors, design makers and retailers – and promotes Responsible Wood certified products.

- 2017: Lou Coutts, external relations manager, HVP Plantations, based at Shelley, Vic. (moving plantation forestry into new ground for stakeholder management, public access to plantation land, interactive websites, on-line inductions and social media).

- 2018: Liliane Kao, digital marketing specialist, Hyne Timber. (Developed unique building information model (BIM) content for glue laminated timber which captured and electronically communicated sustainability data available through chain of custody certification into the BIM environment).

On the board

Dr Hans Drielsma AM, B.Sc. For (Hons), M.F.S., M.Phil., Ph.D., FAICD (chair)
Nathan Trushell B.Sc. (REM), MIFA

Katie Fowden
Mark Thomson
Judi Alexander

Willie van Niekerk
Patrizia Torelli
Craig Smith

Chief Executive Officer
Simon Dorries